

miniflex classic



miniflex^{classic} - movability in miniature format

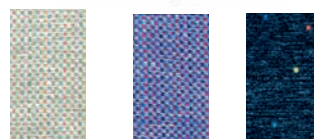
Miniflex Classic is a mini-sized indoor power wheelchair that is equipped with the same ergonomically designed seat as you can find on our work chair 200 Classic. Miniflex is front wheel driven and the slightly larger front wheels make it easier to get over thresholds and the small size simplifies getting close to tables or work areas. The fixed back wheels make sure the wheelchair keeps constant contact with the ground.



Add leg support to complete your Miniflex Classic. A full size foot plate, divided leg support or perhaps an amputation support. There are many options available for making it easy to adjust Miniflex Classic to fit each user.



Miniflex Classic is run by this straight forward control box.



Miniflex Classic is available in gray Video, blue Video or black Dot colors.



Choose between low or high back. 35x30 or 35x44 cm.



Choose between different seat sizes. 40x40, 40x46, 46x46, 49x51 cm as well as Coxit

Standard:

- miniflex chassi
- 200 Classic seat unit
- armsupport - Adjustable
- seat size 46x46 cm
- seat angle - manual
- back - 35x30 cm
- controlbox - Dynamic G90T
- electric actuator - 250 mm stroke

Accessories: (a selection)

- back - hight 35x44 cm
- neck support - for high back
- trunk support
- side suport
- arm support - soft
- abductor
- seat size 40x40, 46x40, 49x51, coxite 46x46 cm
- covers - seat and back - inc.protected
- seat tilt - electric
- table
- foot plate
- leg support - separate-manual or electric

Technical facts:

Class	A (indoor use)
Obstacle climb	3 cm
Drive	front wheel drive
Seat, width- between armsupports	38-52 cm
Seat, depth -from back to seat front	32-58 cm
Seat, height - to seat top	55-80 cm, 50-68 cm short actuator *
Seat, sizes, WxD , cm	40x40,40x46, 46x46, 49x51 cm
Seat, angle, manual, forward	0° to +20°
Seat, tilt, EL- forward-backward	-18° to +10°
Back, size, std WxH	35x30, 35x44 cm
Fabric, colors	grey, blue Video, black Dot
Armsupport, height	0-25 cm
Armsupport, size	31x8 cm
Total length - chassis	74 cm
Total -width - chassis	58 cm
Total weight	60 kg
Max user weight	140 kg
Turning radius	120 cm
Max driving time	8,5 h
Max speed	4 km/h
Electronics	Dynamic

* the actuators position in the chassis is adjustable in a screw joint with max. +(-) 5 cm.