

flexmobil classic



 **EUROFLEX**



flexmobil^{classic} - easy to drive flexibility

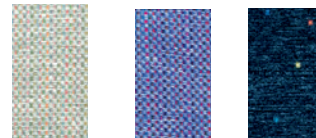
Flexmobil Classic is an indoor power wheelchair that is very easy to maneuver and steady in any situation. The turning radius will be minimal since the driving wheel is centrally located below the seat. The seat unit is the same reliable seat you can find on our work chair 200 Classic and it is fitted with Trevira cloth for highest comfort and correct seating. Flexmobil can easily be adjusted to different users' needs through a wide variety of options and accessories.



Add leg support to complete your Flexmobil Classic. A full size foot plate, divided leg support or perhaps an amputation support. There are many options available for making it easy to adjust Flexmobil Classic to fit each user.



Flexmobil Classic is run by this straight forward control box.



Flexmobil Classic is available in gray Video, blue Video or black Dot colors.



Choose between low or high back. 35x30 or 35x44 cm.



Choose between different seat sizes. 40x40, 40x46, 46x46, 49x51 cm as well as Coxit

Standard

- flexmobil chassie
- 200 Classic seat
- armsupport - adjustable
- seat size 46x46 cm
- seat angle - manual
- back - 35x30 cm
- controlbox - Dynamic G90T
- electric actuator - 250 mm stroke

Accessories: (a selection)

- back - height 35x44 cm
- neck support - to high back
- trunk support
- side support
- arm support - soft
- abductor
- seat size 40x40, 46x40, 49x51, coxite 46x46 cm
- covers - seat and back - inc. protected
- seat tilt - electric
- table
- foot plate
- leg support - separate-manual or electric

Technical facts:

Class	A (indoor use)
Obstacle climb	max 3 cm
Drive	center wheel drive
Seat, width- between armsupports	38-52 cm
Seat, depth -from back to seat front	32-58 cm
Seat, height - to seat top	55-80 cm, 50-68 cm short actuator. *
Seat, sizes, WxD , cm	45x45, 40x40, 40x45, 50x50, 45x45 cm
Seat, angle, manual, forward	0° to +20°
Seat, tilt, EL- forward-backward	-18° to +10°
Back, size, std WxH	37x23 cm
Back, height from seat, std back	21-36 cm
Neck support, size	25x8 cm
Fabric, colors	black, blue
Armsupport, height	19-25 cm
Armsupport, size	31x8 cm
Total length - chassis	82 cm
Total -width - chassis	57 cm
Total weight	75 kg
Max user weight	140 kg
Turning radius	96 cm
Max driving time	8,5 tim
Max speed	4 km/h
Elektronics	Dynamic

* the actuators position in the chassis is adjustable in a screw joint with max. +/- 5 cm.

Eurovema AB förbehåller sig rätten till eventuella tekniska ändringar



art.nr. BRO-600-01 rev:2010-12